

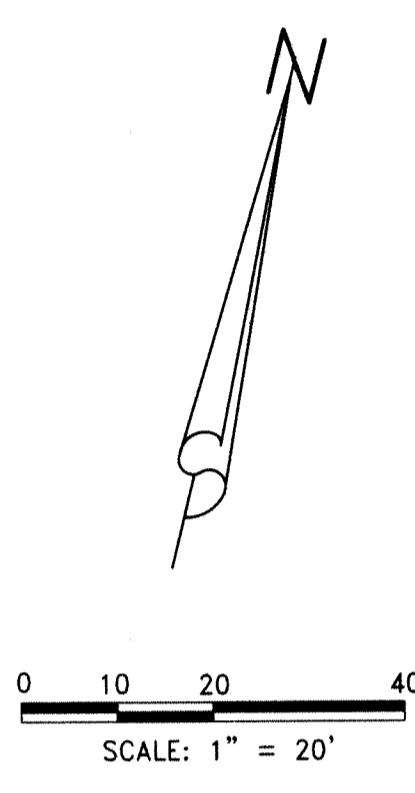
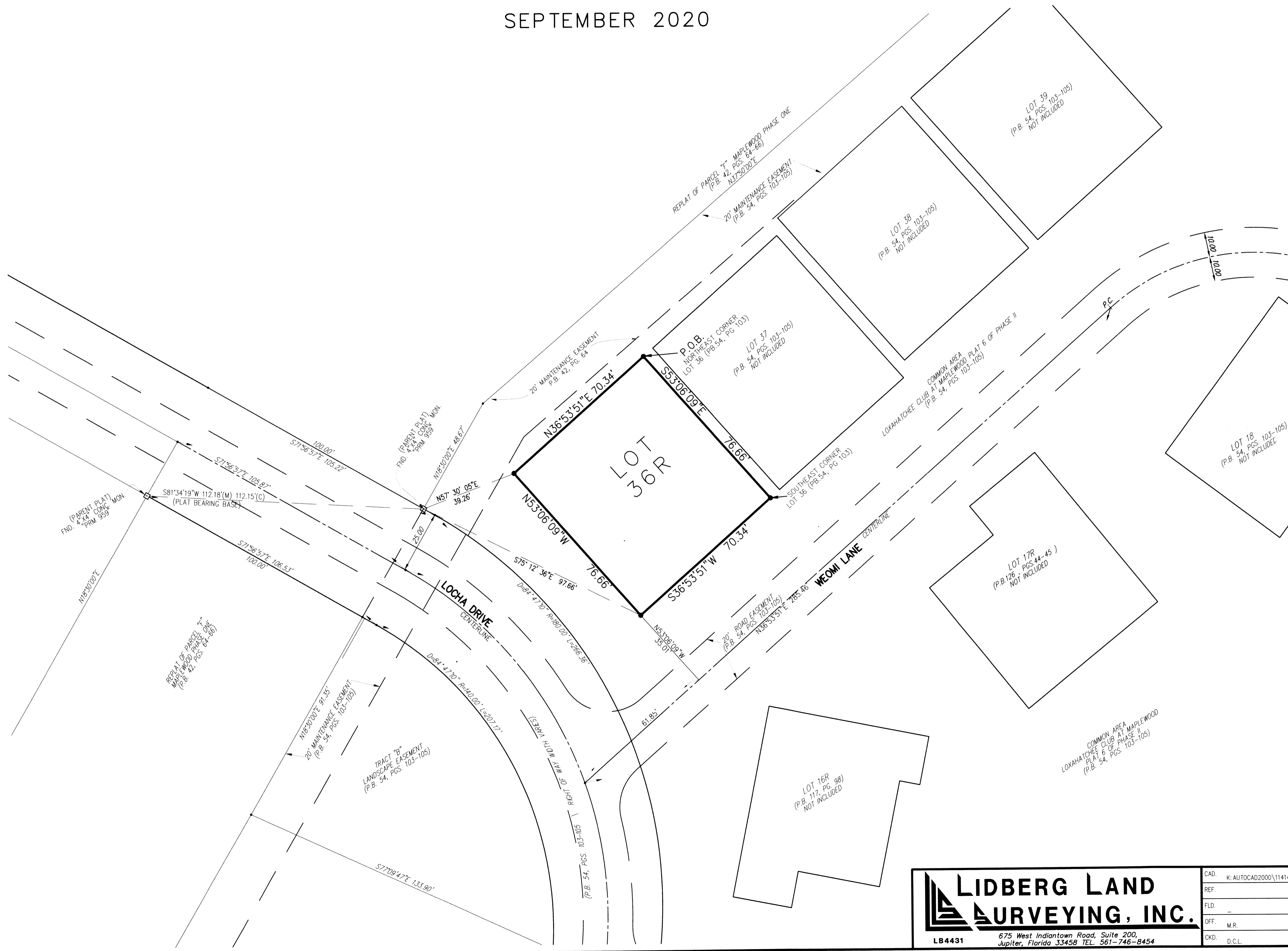
LOXAHATCHEE CLUB AT MAPLEWOOD PLAT No. 30 OF PHASE II

BEING A REPLAT OF LOT 36, AND A PORTION OF THE COMMON AREA,
 AS SHOWN ON THE PLAT OF THE LOXAHATCHEE CLUB AT MAPLEWOOD PLAT No. 6 OF PHASE II,
 RECORDED IN PLAT BOOK 54, PAGES 103-105, PUBLIC RECORDS OF PALM BEACH COUNTY, FLORIDA
 LYING IN SECTION 11, TOWNSHIP 41 SOUTH, RANGE 42 EAST
 TOWN OF JUPITER, PALM BEACH COUNTY, FLORIDA

SEPTEMBER 2020

81

SHEET 2 OF 2



ABBREVIATIONS:

- (C) = CALCULATED
- CONC. = CONCRETE
- D = CURVE'S DELTA ANGLE
- FND = FOUND
- L = CURVE'S ARC LENGTH
- (M) = MEASURED
- MON. = MONUMENT
- P.B. = PLAT BOOK
- P.C. = POINT OF CURVATURE
- PG. = PAGE
- PGS. = PAGES
- PRM = PERMANENT REFERENCE MONUMENT
- R = CURVE'S RADIUS

LEGEND:

- = SET 5/8" IRON ROD WITH AN ALUMINUM CAP STAMPED P.R.M. LB #4431

LIDBERG LAND SURVEYING, INC.
 675 West Indiantown Road, Suite 200
 Jupiter, Florida 33458 TEL. 561-746-8454

CAD.	K:\AUTOCAD2000\114142\54-103\20-018\DWG\20-018-306.DWG		
REF.			
F.L.D.	FB.	PG.	JOB 20-018-306
OFF.	M.R.		DATE APRIL 2020
CKD.	D.C.L.	SHEET 2 OF 2	DWG. 020-018P